



**PRAIRIE KNOLLS MIDDLE SCHOOL
WELCOMES YOU!**

Introductions



- Principal
 - ✦ Mrs. Kolkebeck
- Dean of Students
 - ✦ Mr. Gibbs
- Director of Student Services & Athletic Director
 - ✦ Mrs. Mecum
- Secretaries
 - ✦ Mrs. Whyte
 - ✦ Mrs. Thomas
- Director of Transportation
 - ✦ Mr. Lemcke

Transition to Middle School



- Teaming
- Task / Band / Choir (registration via sheet coming home this Friday)
- Expectations
 - ✦ Assignment notebook
 - ✦ Back-to-School Night
 - ✦ Homework
- On-line grade access
- Grades: “It’s not about the grade, it’s about the tools!”



Transition to Middle School



- Supply Lists – Sent home with your student's fourth quarter report card and posted on our website
- Lockers (practice over the summer)
- Schedules (mailed home towards the end of July; opportunity for students to come to PKMS in August to set up lockers)

District & State Assessments



- MAP (Measures of Academic Progress) (District through 11th grade)
 - Fall & Spring MAP (Measures of Academic Progress) for both Reading & Math
- ISATs (Illinois Standards Achievement Test) (State)
 - First week of March
 - ✦ 6th: Reading & Math
 - ✦ 7th: Reading, Math & Science
 - ✦ 8th: Reading & Math
- EXPLORE (EPAS System: EXPLORE, PLAN, ACT) (District)
 - Eighth-grade academic achievement displays a stronger relationship with college and career readiness than does any other factor (beyond family background, high school coursework, or high school GPA).
 - 8th: EXPLORE (November)
 - 9th: EXPLORE (November)
 - 10th: PLAN
 - 11th : ACT

Arriving at School



- School begins at 7:43 am
- Students may enter the building at 7:30 am
- Buses drop students at the grade level doors
- Walkers may enter either front entrance or grade level doors
- Car riders must be dropped off/picked up at the front entrance (not in the back parking lot)
- Bike riders may enter either front doors or grade level doors

Classes



- CORE Classes

- Math
- English
- Science
- Social Studies
- Literature

**Task

- ENCORE Wheel

- General Music
- Living Skills
- Art
- Computers
- PE/Health
- **Chorus/Band (in place of task)

ENCORE WHEEL



- 6th & 7th Grade – Quarterly Encore Wheel
- 8th Grade – Semester Encore Choices or Foreign Language Course
 - Placement Policy for Foreign Language Courses
 - ✦ Attain a grade of “B” or better in Language Arts classes in 6th & 7th grades
 - ✦ Attain a grade of “C” or better as a cumulative average in all subjects in 6th & 7th grades.

PE/Health



- Students do change into a uniform for class each day.
- Uniforms will be sold in the students' PE classes – cost is \$20.00.
- Please do not send students with money the first day.

Lunch Program



- Swipe card lunch system
- Picture & name on cash register
- Add money on card at school with cash or check
- Add money using credit or debit card on-line (\$1.95 transaction fee)
- www.mylunchmoney.com

Leaving School



- School day ends at 2:35 pm
- Bus riders will exit the grade level doors
- Walkers will exit the grade level doors
- Bike riders will exit the grade level doors – bikes must be walked while on school property
- Car riders will exit the main entrance

Extracurricular Activities



- Cross Country (information sent home with 4th quarter report card)
- Wrestling
- Scholastic Bowl
- School Play
- Student Council
- S.T.A.R.
 - Pentathlon
 - Minute to Win It, Fear Factor & Survivor
- Teacher-Sponsored Clubs

Picture Day



- First or Second Day of School
- Picture is used to create student ID
- ID uses:
 - ~LMC
 - ~Dances
 - ~Lunch program
 - ~CHS sporting events

Communication



- Weekly Newsletter Blasts via E-mail and posted on the PKMS website
- Progress Grades Update Notice via E-mail (access grades on-line)
- Report Cards for quarters 1-3 will be mailed home. Students will receive their fourth quarter report card at school (except 8th grade).
- Honor Roll certificates for quarters 1-3 will be handed out during lunch to honor students, quarter 4 will be mailed home. Students who meet the criteria for honor roll on all 4 quarters will receive a PKMS Honor Roll Magnet.

Bully Intervention Program



- **Bullying Defined** - District #301 Middle School Handbook
- **INTIMIDATION / HARASSMENT / TAUNTING / BULLYING / CYBER-BULLYING:** aggression in which a student or group of students physically or psychologically (mentally) harasses a victim.
 - The action could include but is not limited to hitting, pushing, kicking, tripping, destroying things, name-calling, ridiculing, verbal threats, gossip, rumors, isolating others, and making sexual comments or gestures.
 - This policy prohibits any person from harassing or intimidating a student based upon a student's sex, color, race, religion, creed, ancestry, national origin, physical or mental disability, sexual orientation, or other protected group status.
 - **Inappropriate Written / Electronic Materials:**
 - ✦ Accessing and / or distributing at school any written or electronic material, including material from the Internet that will cause substantial disruption of the proper and orderly operation and discipline of the school or school activities.
 - ✦ Creating and/or distributing written or electronic material, including Internet material and blogs, that causes substantial disruption to school operation or interferes with the rights of other students or staff members.

Bully Intervention Program



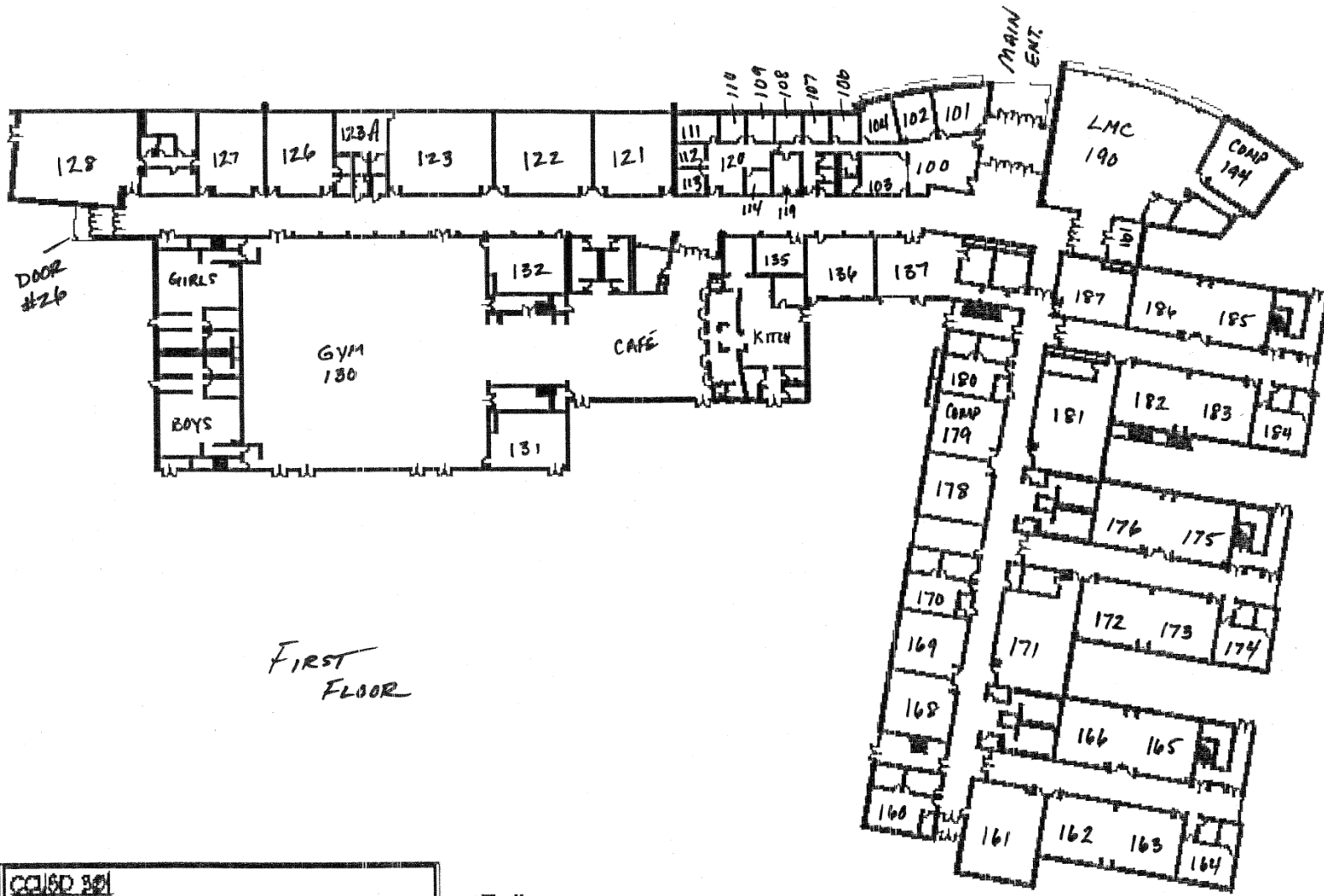
- **Prevention**

- STAR Character Education Program (Students That Accept Responsibility)
- Health Curriculum
- Administrative beginning of the year talk, as well as a mid-year activity.
- Monthly information made available to students

- **If Bullying occurs...**

- Bully Box in the office with forms
- Inform a teacher or contact the office
- Website – “PKMS Stamps Out Bullying” – click and an email will be generated

- **Levels of Intervention**



FIRST FLOOR

CC160 301 PRAIRIE KNOLLS MIDDLE SCHOOL
- - - - - FIRE ESCAPE PATH - - - - - TORNADO REFUGE PATH





Questions???

We are looking forward to partnering with you next year for your child's education at PKMS, please feel free to contact us with any questions.

Theresa Kolkebeck: tkolkebeck@burlington.k12.il.us

Andy Gibbs: agibbs@burlington.k12.il.us

Cindy Mecum: cmecum@burlington.k12.il.us

It's a great day to be a Falcon!

